

# Abomination Skin Editor V1.0

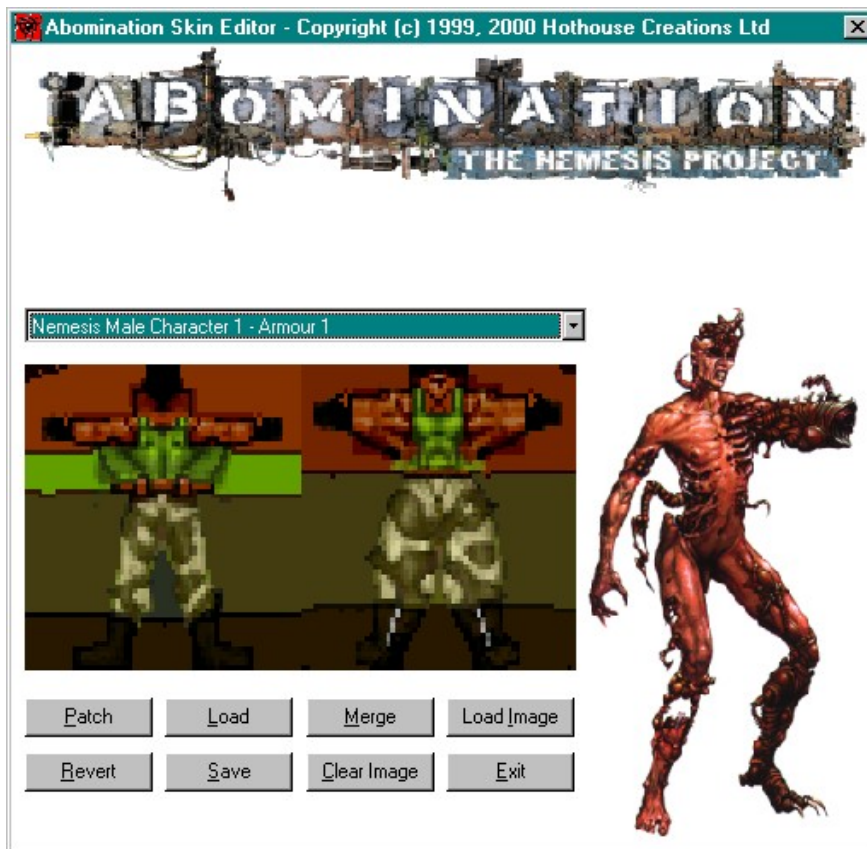
Program and Title Copyright 1999 Hothouse Creations Ltd. All rights reserved.

## Directions for Use

This utility allows the importing of modified **ABOMINATION: The Nemesis Project** character skin textures. Included with this file are four sample skins (SKIN1 to SKIN4 in BMP format) for you to use as templates for the creation of new skins using a paint program (such as Paint or Paint Shop Pro).

The game should be installed for this utility to work 100%.

Run the self-extracting ZIP and when prompted supply your chosen destination directory. You will need to create your own shortcut or start menu link to the file "**Abomination Skin Editor.exe**".



The **Load** button is used to load Abomination Skin Wad (.ASW) files, a default one that is included and loads when you launch the editor. This allows you to see all the player skins used in Abomination or the custom ASW file.

To replace a skin, select the character you want to substitute from the **drop down** menu list. Then select the **Load Image** button and locate and select your chosen skin BMP file and OPEN it. The new image will replace the one in the Abomination Skin Wad file. **Save** the ASW file under a name of your choice.

To apply the change to the game select the **Patch** button.

To remove the changes select the **R**evert button or re-apply the default Abomination Skin Wad.

The **M**erge button allows two ASW files to be merged together. Load a modified Abomination Skin Wad into memory, then select **M**erge. Select the ASW file of your choice on your Hard Drive and select OPEN. Select OVERWRITE and all skins in Memory will be changed to those stored in the chosen ASW file on the Hard Drive. Decline OVERWRITE and only those images that are not modified in the file in Memory will be overwritten.

The **C**lear Image button clears the selected skin from the ASW file and replaces it with the default one.

The **E**xit button closes the application.

In multiplayer mode ALL player will need to have the same ASW file to see the characters the same on their respective PC's.

### **Technical Support**

No support is given with this Utility.

The use of this program may cause unpredictable effects during game play as data is modified with its use.